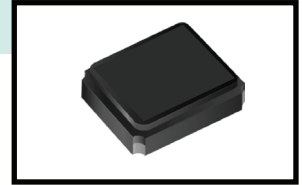


Quartz Crystal Resonator (MHz)

SX3225GAU

AUTOMOTIVE, AEC-Q200



General Description

The SX3225GAU is a glass sealing crystal unit specific for applications, which require high mechanical reliability and wide operating temp. range

Features

Wide operating temp. range
Superior performance in harsh environment
contains Pb in sealing glass exmpted by RoHS directive

Main applications

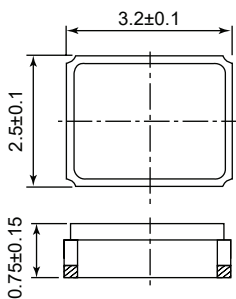
TPMS, ECM, ABS, sensors

Electrical characteristics

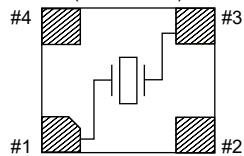
Item	Symbol	Values
Part number		SX3225GAU
Mode of vibration		Fund.
Frequency range	F	9.9 - 65 MHz
Frequency tolerance (@ +25°C)	$\Delta f/F$	$\pm 30\text{ppm}$ or specify
Frequency stability	$\Delta f/F$	$\pm 50\text{ppm}$
Operating temp. range	To	-40°C / +125°C
Storage temp. range	Ts	-40°C / +150°C
Load capacitance	Cl	8pF , 10pF or specify
Equivalent serie resistance	ESR	see table 1
Drive level	P	0.1mW
Reliability standard		AEC-Q200

Table 1	ESR
9.9 - 12 MHz	200Ω max
12 - 20 MHz	120Ω max
20 - 65 MHz	60Ω max

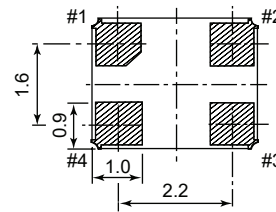
Dimensions



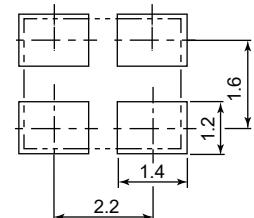
Terminal land connections (TOP VIEW)



*#2 and #4 are not connected.
It is better to connect with a GND.
But NC is also possible.



Land pattern (Typical)



Quartz Crystal Resonator (MHz)

SX3225GAU

Part Number Generator

SX5032GAU	10.000000	F	AT	P20	E	F	H	TR	xxx
0	1	2	3	4	5	6	7	8	9

0 : Holder
SX3225GAU

1 : Frequency (MHz)
□□□.□□□□□□
max 10 digits including comma

2 : Vibration mode
F = Fund.

3 : Cut
AT

4 : Load capacitance
S=Serie
P20=20pF
P30=30pF
etc

5 : Tolerance
A= $\leq \pm 30$ ppm
C= $\leq \pm 20$ ppm

6 : Op. temp. range
N=-40/+85
T=-40/+125

7 : Stability
A1 < ± 100 ppm
A < ± 50 ppm

8 : Packing
TR = Tape & Reel

9 : Customized code
Note : factory use

