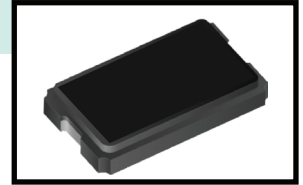


Quartz Crystal Resonator (MHz)

SX8045GAU

AUTOMOTIVE, AEC-Q200



General Description

The SX8045GAU is a glass sealing crystal unit specific for applications, which require high mechanical reliability and wide operating temp. range

Features

Wide operating temp. range
Superior performance in harsh environment
contains Pb in sealing glass exmpted by RoHS directive

Main applications

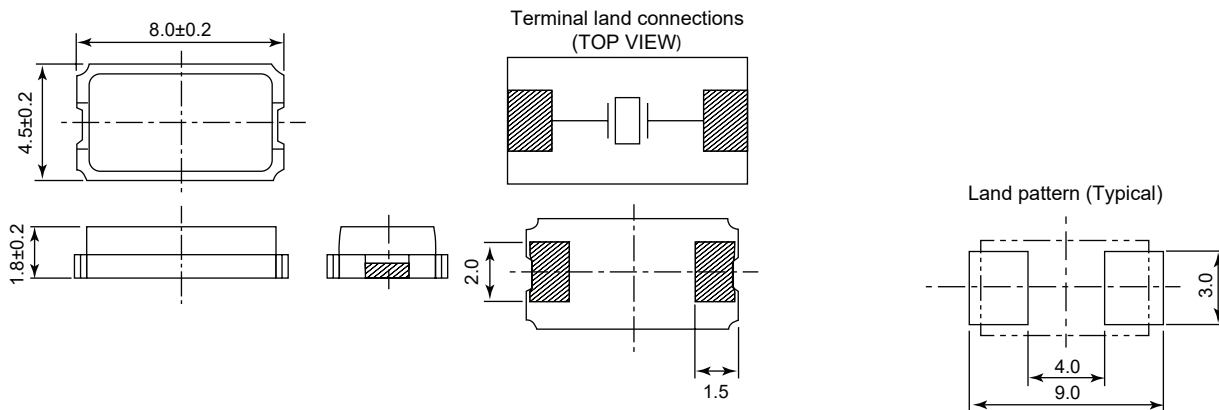
TPMS, ECM, ABS, sensors

Electrical characteristics

Item	Symbol	Values
Part number		SX8045GAU
Mode of vibration		Fund.
Frequency range	F	8 - 40 MHz
Frequency tolerance (@ +25°C)	$\Delta f/F$	$\pm 30\text{ppm}$ or specify
Frequency stability	$\Delta f/F$	$\pm 50\text{ppm}$ max [-40°C / +85°C]
Operating temp. range	To	-40°C / +150°C
Storage temp. range	Ts	-40°C / +150°C
Load capacitance	Cl	8pF or specify
Equivalent serie resistance	ESR	see table 1
Drive level	P	typical 0.01mW , max 0.5mW
Reliability standard		AEC-Q200 Ver. C

Table 1	ESR
8 - 10 MHz	120Ω max
10 - 12 MHz	100Ω max
12 - 40 MHz	80Ω max

Dimensions



SX8045GAU

Part Number Generator

SX8045GAU	10.000000	F	AT	P20	E	F	H	TR	xxx
0	1	2	3	4	5	6	7	8	9

0 : Holder
SX8045GAU

1 : Frequency (MHz)
□□□.□□□□□□
max 10 digits including comma

2 : Vibration mode
F = Fund.

3 : Cut
AT

4 : Load capacitance
S=Serie
P20=20pF
P30=30pF
etc

5 : Tolerance
A= ≤±30ppm
C= ≤±20ppm

6 : Op. temp. range
N=-40/+85
T=-40/+150

7 : Stability
A1< ±100ppm
A< ±50ppm

8 : Packing
TR = Tape & Reel

9 : Customized code
Note : factory use

Remark : specifications subject to change without prior notice. Please confirm with our sales